

GAYATRI COLLEGE OF SCIENCE & MANAGEMENT

(Affiliated to Dr. B R AMBEDKAR UNIVERSITY)

Accredited by NAAC & ISO

Under the Management of GURAJADA EDUCATIONAL SOCIETY

Munasabpetta – SRIKAKULAM – 532401

STAKEHOLDERS FEEDBACK ANALYSIS REPORT FOR THE ACADEMIC YEAR 2019-20 (Student's)

OBJECTIVE OF FEEDBACK:

The institution aims to offer the best possible environment and learning experience to encourage students to perform to their full potential for academic achievement.

Stakeholders i.e., students, teachers, employers play an important role in the evaluation development and enhancement of quality of this learning process.

Hence, the institution collects feedback from all the stakeholders i.e., students, teachers, employers and alumni every academic year on curriculum/syllabi to evaluate it's service policies can be revised and make changes as per stakeholders requirements.

STUDENT'S FEEDBACK:

STUDENT'S FEEDBACK ON CURRICULUM:

The Student's Feedback on curriculum is designed to get formative feedback from students that can be used towards the improvements in the quality of course design and delivery, as well as student learning experiences.

In the session 2019-20, the college collected the feedback from around 100 students of different streams. The data is analyzed and their suggestions are considered for possible incorporation in the curriculum.

ANALYSIS:

The student's feedback on curriculum was taken from the students of BSc, MSc at the end of each semester/ academic year.

S.no	Courses Offered	No. of. feedback Collected
1	BSc	70
2	MSc(Chemistry)	30

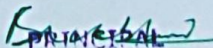

PRINCIPAL

Gayatri College of Science & Management
Munasabpetta-Srikakulam-532 402

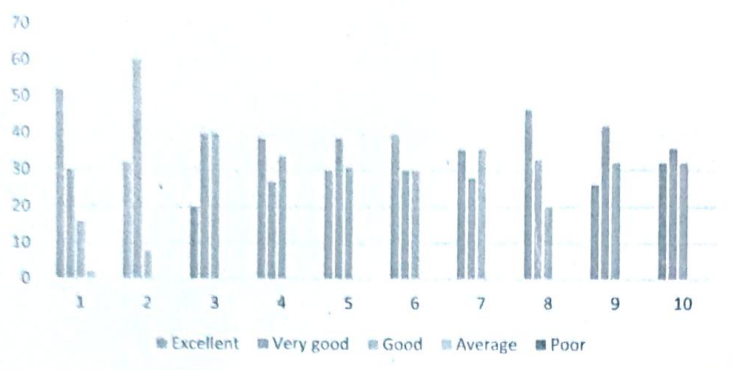
STUDENT'S FEEDBACK ON CURRICULUM:

Total respondents: 100

S.NO	Parameters	Excellent	Very good	Good	Average	Poor
1	The syllabus was challenging	52	30	16	2	0
2	Content of the course and relevant of the units	32	60	8	0	0
3	The depth of the course content is adequate	20	40	40	0	0
4	Size of the syllabus in terms of the load of students	39	27	34	0	0
5	Syllabus equipped with necessary skills to face the industry	30	39	31	0	0
6	The recommended textbooks are adequately available and map on to the syllabus	40	30	30	0	0
7	Syllabus enabled to improve the ability to formulate, analyze and solve problems	36	28	36	0	0
8	The laboratory experiments correlate with the theory(Experimental Learning)	47	33	20	0	0
9	How do you rate the evaluation scheme designed for each of the course	26	42	32	0	0
10	Overall Experience	32	36	32	0	0


PRINCIPAL
Gayatri College of Science & Management
Munasabpetta-Srikakulam-532 401

Feedback on Curricula/Syllabi 2019-20
Student's Feedback on Curriculum



SUMMARY:

- From the graph, 64.2% of the students gave feedback as excellent that the curriculum/syllabus was challenging.
- 36.50% of the students gave feedback as very good about the content of the course and relevance of the units.
- 27.9% of the students gave feedback as good that the curriculum on the depth of the laboratory experiments correlate with the theory(Experimental Learning).
- 0.2% of the students gave feedback as average that the curriculum size of the syllabus in terms of the load of the students.

B. V. R. S.
PRINCIPAL

Gayatri College of Science & Management
Munasabpet-Srikakulam-532 401